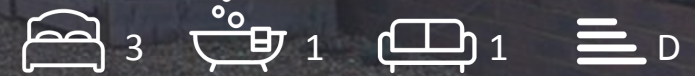


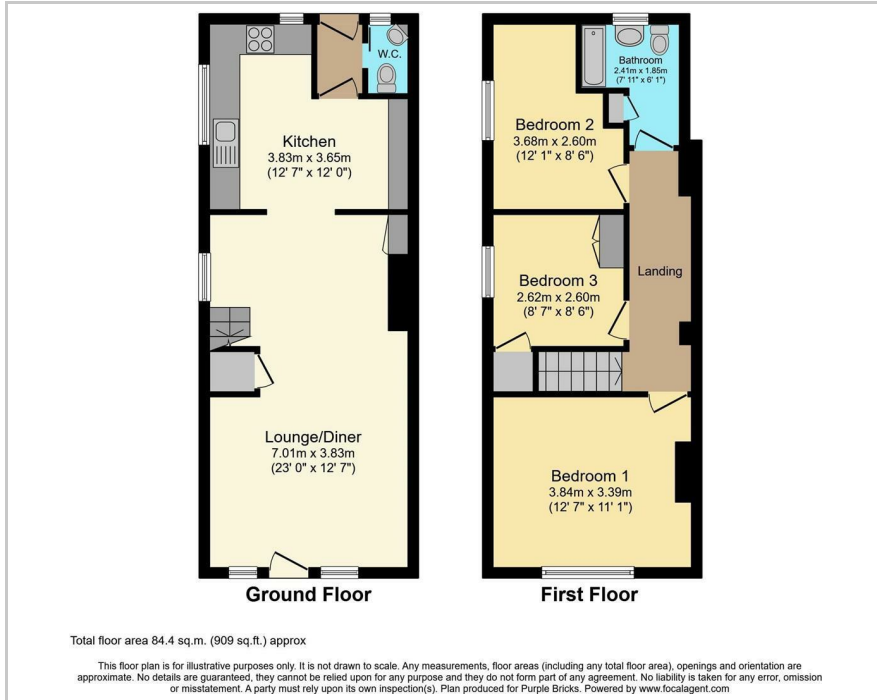


**1 Beech Cottages St. Johns Road, Haywards Heath, RH16 4EH**

**£1,525 Per Month**



## Floor Plan



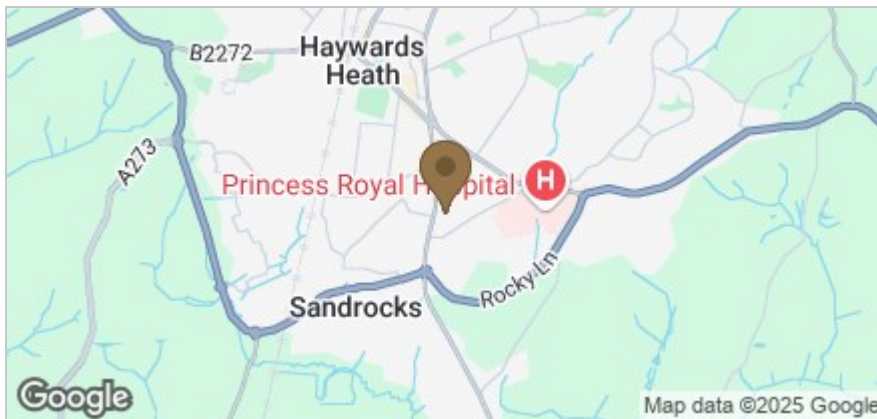
## Accommodation

A modern 3 bedroom family house is available immediately through Duffy & Co.

The bright and spacious property offer a large open plan living room with a really good sized fitted kitchen, separate WC and a low maintenance courtyard garden to the rear. On the first floor are 3 bedrooms and a family bathroom.



## Area Map



Energy Efficiency Rating		Environmental Impact (CO <sub>2</sub> ) Rating			
Very energy efficient - lower running costs	Current	Potential	Very environmentally friendly - lower CO <sub>2</sub> emissions	Current	Potential
(92 plus) A			(92 plus) A		
(81-91) B			(81-91) B		
(69-80) C			(69-80) C		
(55-68) D			(55-68) D		
(39-54) E			(39-54) E		
(21-38) F			(21-38) F		
(1-20) G			(1-20) G		
Not energy efficient - higher running costs			Not environmentally friendly - higher CO <sub>2</sub> emissions		
England & Wales	86	68	England & Wales	84	64
EU Directive 2002/91/EC			EU Directive 2002/91/EC		

These particulars, whilst believed to be accurate are set out as a general outline only for guidance and do not constitute any part of an offer or contract. Intending purchasers should not rely on them as statements of representation of fact, but must satisfy themselves by inspection or otherwise as to their accuracy. No person in this firm's employment has the authority to make or give any representation or warranty in respect of the property.