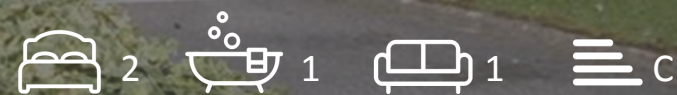


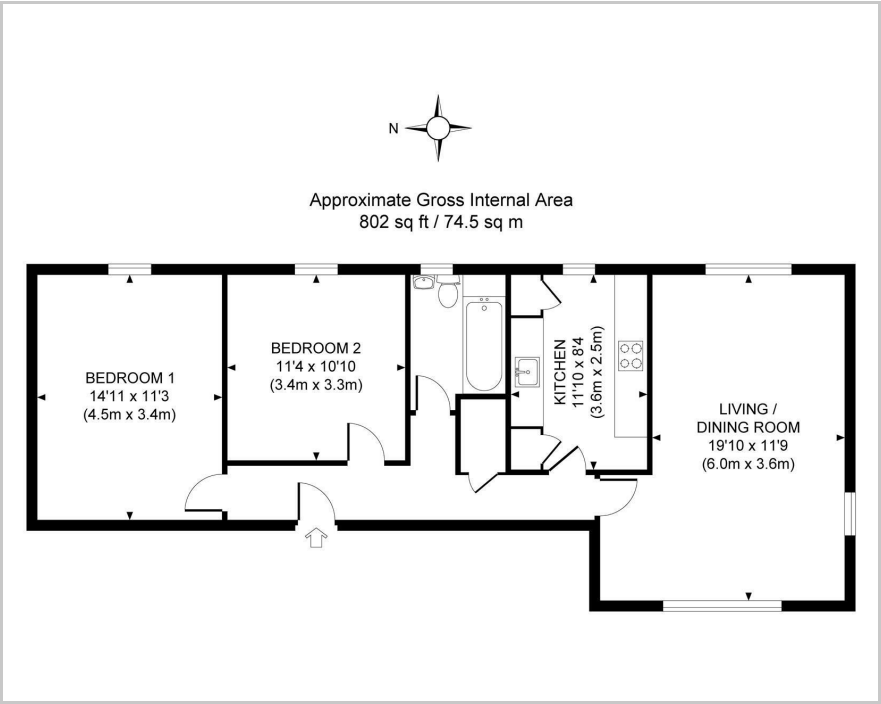


6 Clair Court, Haywards Heath, RH16 3EE

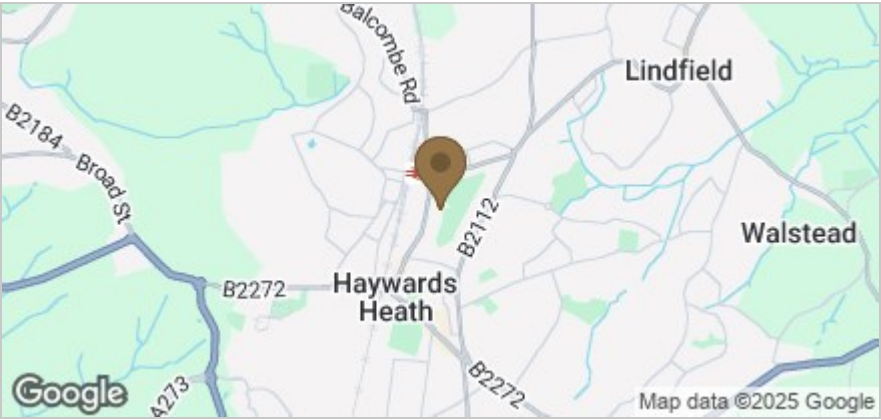
£1,250 PCM



Floor Plan



Area Map



These particulars, whilst believed to be accurate are set out as a general outline only for guidance and do not constitute any part of an offer or contract. Intending purchasers should not rely on them as statements of representation of fact, but must satisfy themselves by inspection or otherwise as to their accuracy. No person in this firm's employment has the authority to make or give any representation or warranty in respect of the property.

Accommodation

This ground floor 2-bedroom apartment in Hayward Heath's popular gated development is currently available through Duffy & Company.

Large living room, 2 double bedrooms, modern kitchen and tiled bathroom.

Recently decorated and new flooring fitted throughout and one allocated parking space.

Viewing

Please contact us on 01444 455221 if you wish to arrange a viewing appointment for this property or require further information.

Energy Efficiency Graph

