

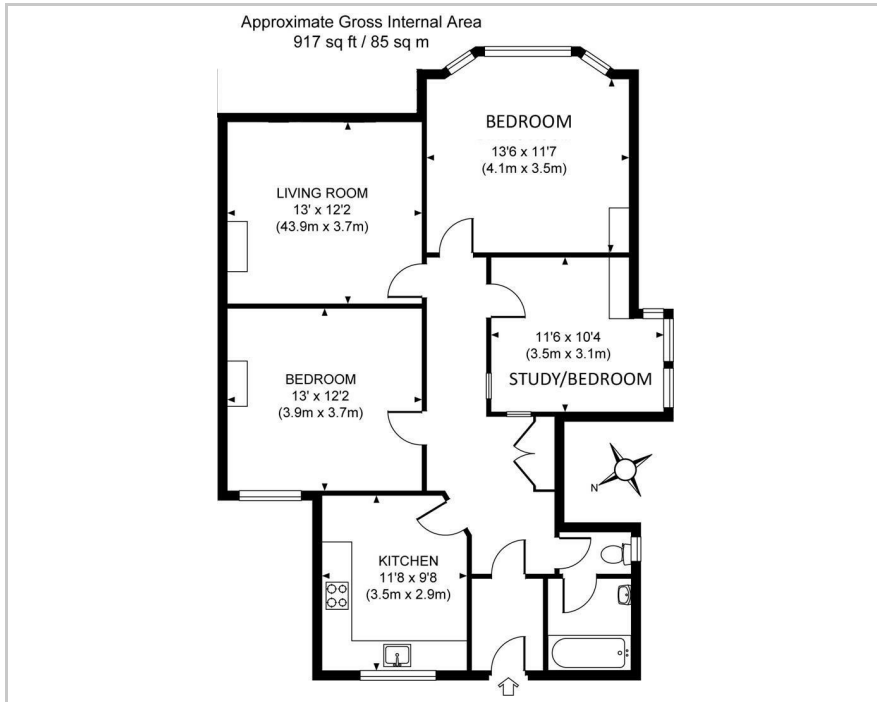


28b Boltro Road, Haywards Heath, RH16 1BB

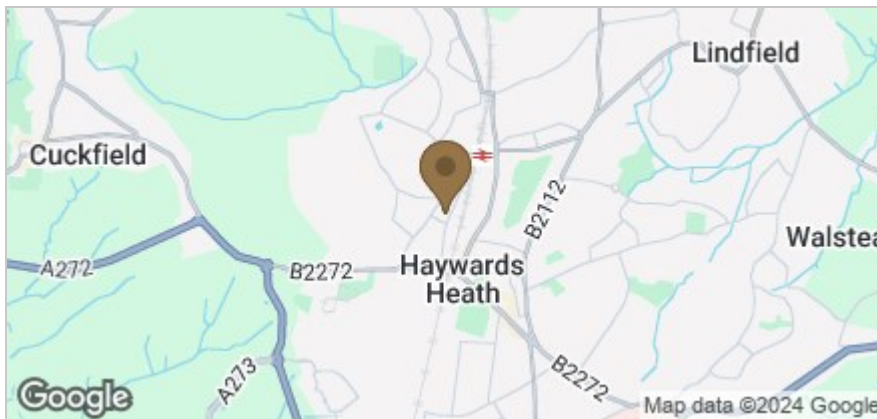
£1,295 PCM



Floor Plan



Area Map



Accommodation

This bright and spacious first-floor flat, ideally located in Haywards Heath, offers a versatile living space with two double bedrooms and versatile third ideally suited as a home office depending on your needs.

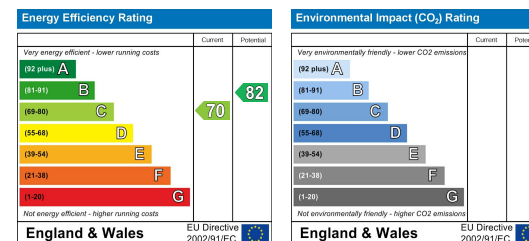
The property is perfectly positioned for those who value convenience, providing easy access to the mainline railway station, making it an excellent choice for commuters or anyone who frequently travels to London, Brighton, and beyond. Additionally, all local amenities are within easy reach, ensuring everything you need is just a stone's throw away.

Available early April 2024.

Viewing

Please contact us on 01444 455221 if you wish to arrange a viewing appointment for this property or require further information.

Energy Efficiency Graph



These particulars, whilst believed to be accurate are set out as a general outline only for guidance and do not constitute any part of an offer or contract. Intending purchasers should not rely on them as statements of representation of fact, but must satisfy themselves by inspection or otherwise as to their accuracy. No person in this firm's employment has the authority to make or give any representation or warranty in respect of the property.