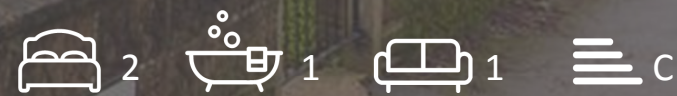




**1 Woodland Crescent, Burgess Hill, RH15 0LJ**

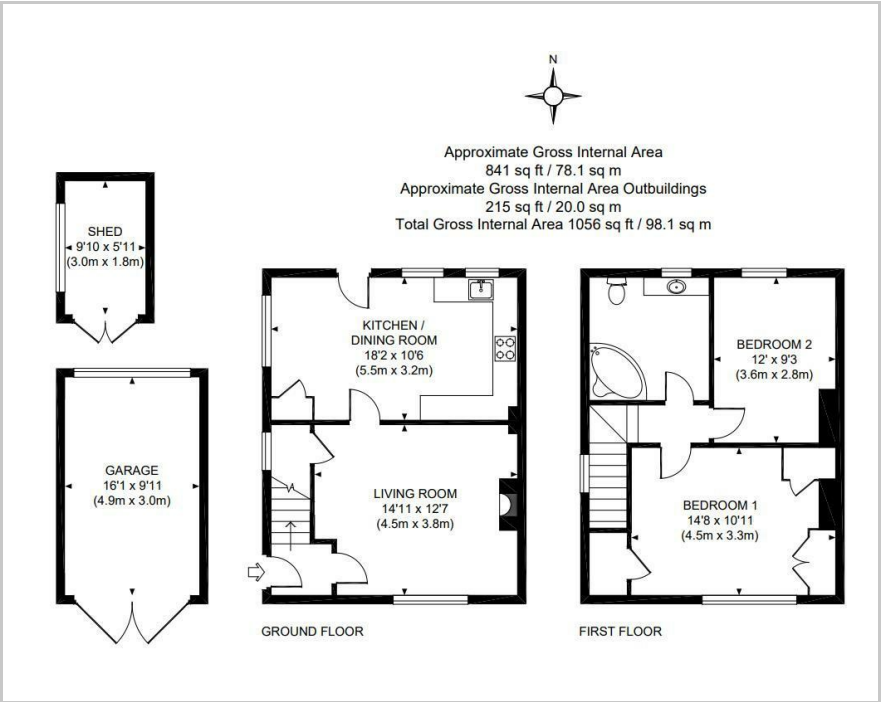
**£1,300 PCM**

Duffy & Company

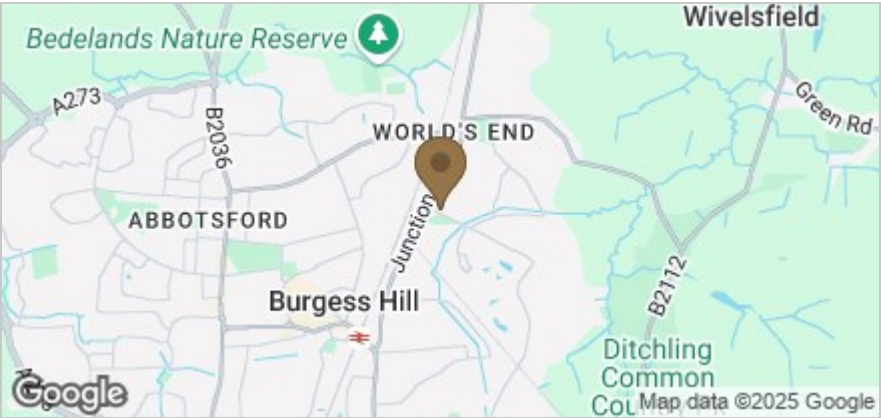




Floor Plan



Area Map



These particulars, whilst believed to be accurate are set out as a general outline only for guidance and do not constitute any part of an offer or contract. Intending purchasers should not rely on them as statements of representation of fact, but must satisfy themselves by inspection or otherwise as to their accuracy. No person in this firms employment has the authority to make or give any representation or warranty in respect of the property.

Accommodation

Available at the beginning of November is a very well presented and spacious two double bedroom house. The property is offered in excellent condition throughout and benefits from having double glazed windows and gas central heating.

Regret No Smokers. A small pet will be considered.

Viewing

Please contact us on 01444 455221 if you wish to arrange a viewing appointment for this property or require further information.

Energy Efficiency Graph

