



8b Pelham Road, Haywards Heath, RH16 2ER

£900 PCM



2



1

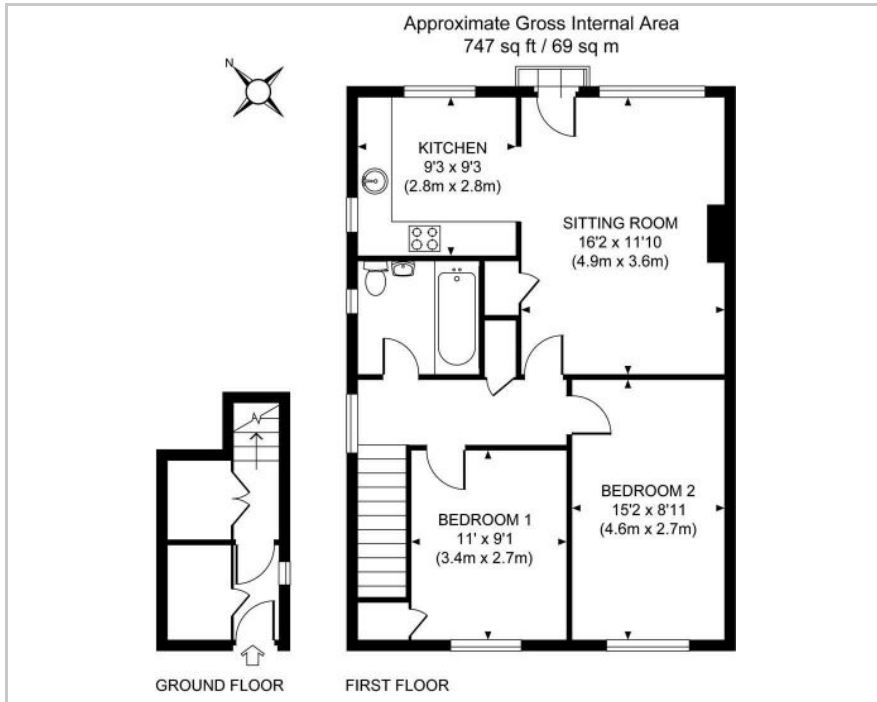


1



C

Floor Plan

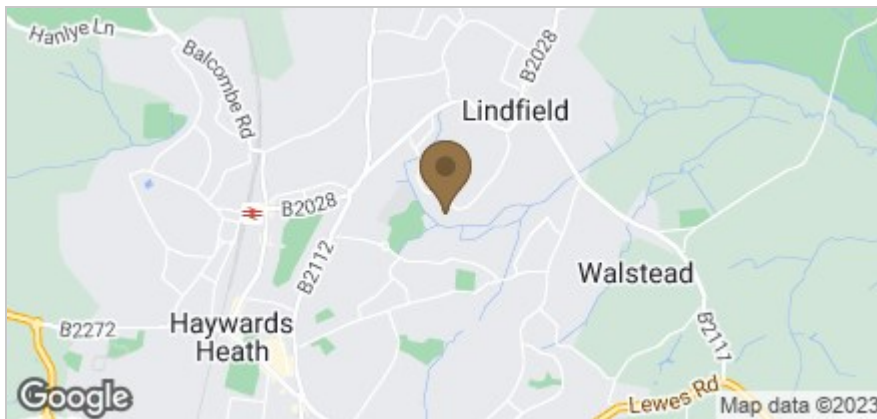


Accommodation

A well presented first floor 2 bedroom apartment is available in Pelham Road, Linfield. The property is accessed through a ground floor private entrance lobby which leads to the first floor leading to all the primary rooms. There is a good sized double aspect kitchen with space for a kitchen table which opens on to a bright living room. There are 2 double bedrooms and a fully tiled family bathroom with a white suite and an electric shower above. This super property further benefits from having its own private garden area to the rear of the property and street parking to front. Available immediately and long term lets preferred. Sorry no pets are allowed.



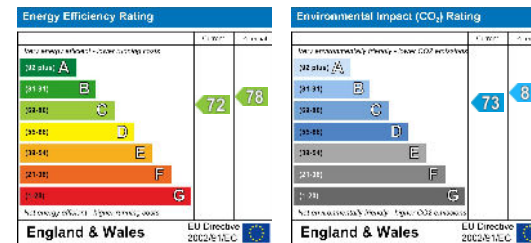
Area Map



Viewing

Please contact us on 01444 455221 if you wish to arrange a viewing appointment for this property or require further information.

Energy Efficiency Graph



These particulars, whilst believed to be accurate are set out as a general outline only for guidance and do not constitute any part of an offer or contract. Intending purchasers should not rely on them as statements of representation of fact, but must satisfy themselves by inspection or otherwise as to their accuracy. No person in this firm's employment has the authority to make or give any representation or warranty in respect of the property.