

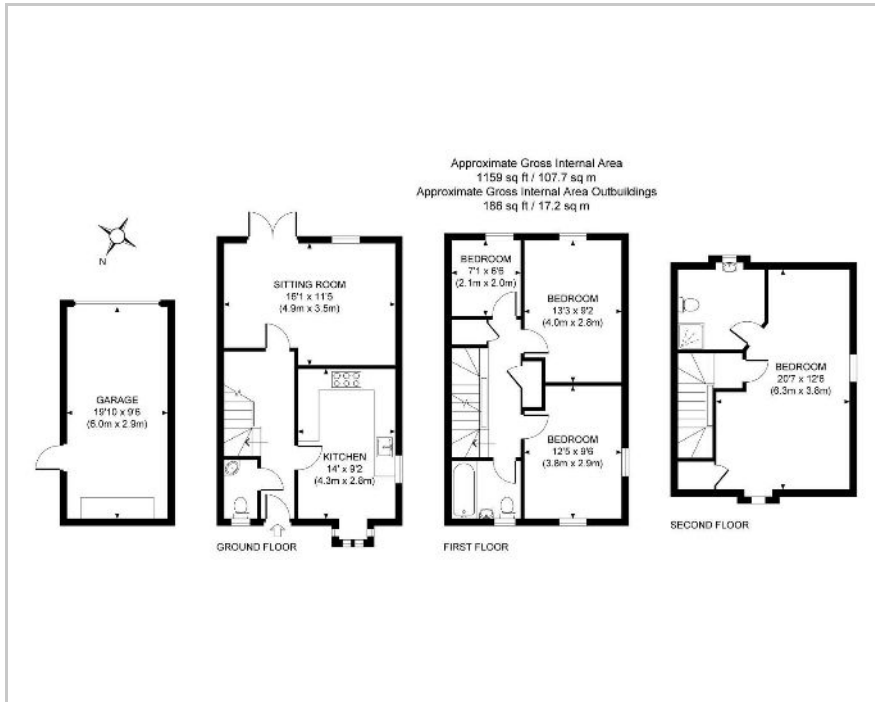


32 St Pauls On The Green, Haywards Heath, RH16 3BD

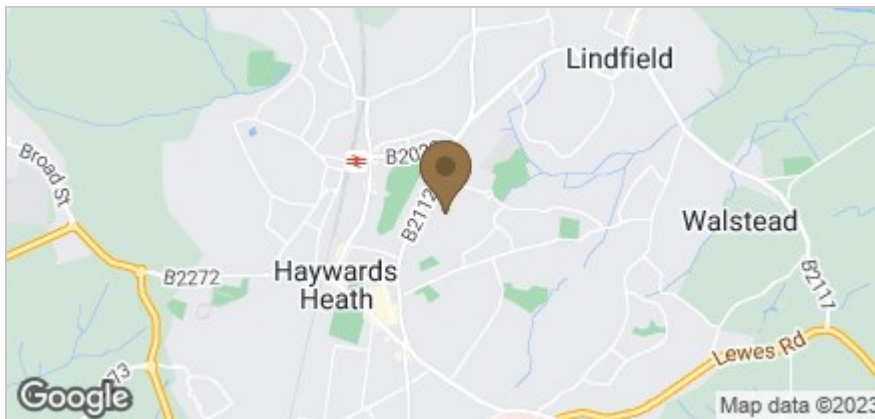
£1,695 PCM



Floor Plan



Area Map



Accommodation

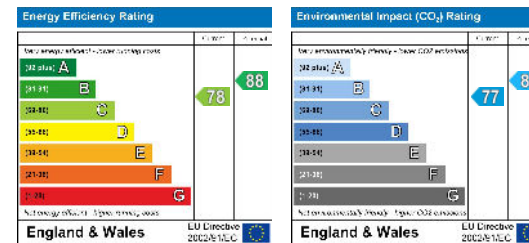
Duffy & Co are pleased to be marketing this immaculate 3/4 bedroom semi-detached house situated in the exclusive 'St Pauls on the Green' development. This modern property offers flexible and spacious accommodation arranged over 3 floors and benefits from being in a very central position of Haywards Heath with easy access to the mainline station, local amenities and schools.



Viewing

Please contact us on 01444 455221 if you wish to arrange a viewing appointment for this property or require further information.

Energy Efficiency Graph



These particulars, whilst believed to be accurate are set out as a general outline only for guidance and do not constitute any part of an offer or contract. Intending purchasers should not rely on them as statements of representation of fact, but must satisfy themselves by inspection or otherwise as to their accuracy. No person in this firm's employment has the authority to make or give any representation or warranty in respect of the property.