

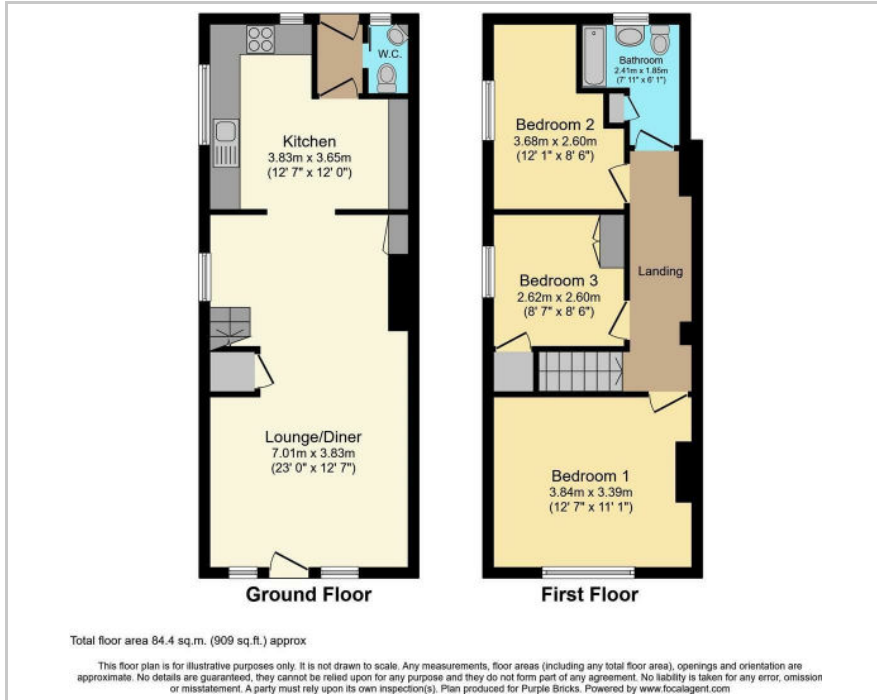


**1 Beech Cottages St. Johns Road, Haywards Heath, RH16 4EH**

**£1,525 Per Month**



## Floor Plan



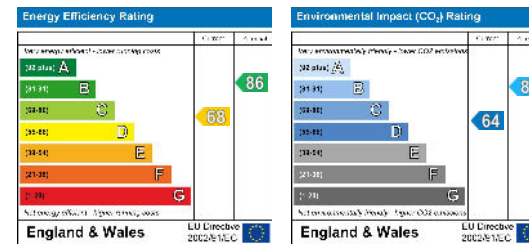
## Accommodation

A modern 3 bedroom family house is available immediately through Duffy & Co.

The bright and spacious property offer a large open plan living room with a really good sized fitted kitchen, separate WC and a low maintenance courtyard garden to the rear. On the first floor are 3 bedrooms and a family bathroom.



## Area Map



These particulars, whilst believed to be accurate are set out as a general outline only for guidance and do not constitute any part of an offer or contract. Intending purchasers should not rely on them as statements of representation of fact, but must satisfy themselves by inspection or otherwise as to their accuracy. No person in this firm's employment has the authority to make or give any representation or warranty in respect of the property.