



36 Fieldway, Haywards Heath, RH16 2DD

£1,500 PCM



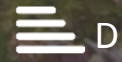
3



1

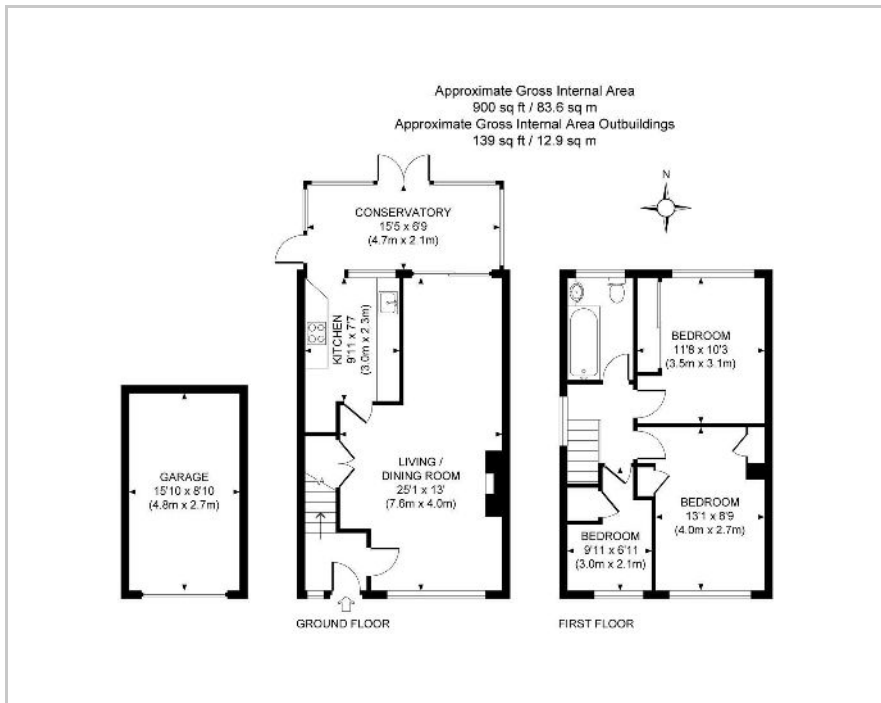


1

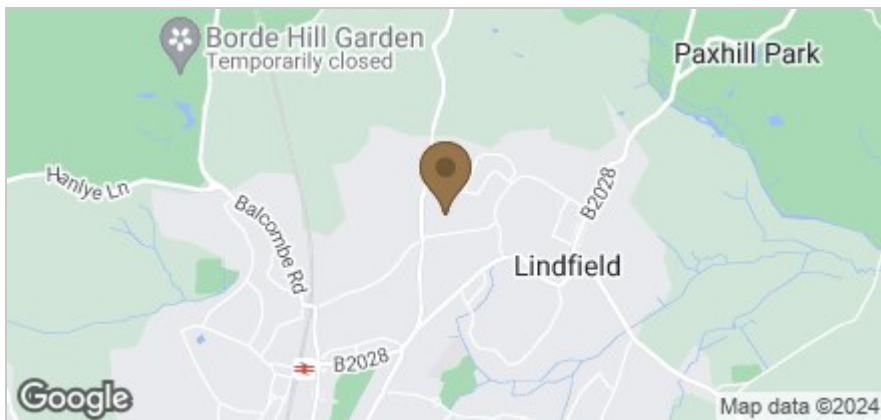


D

Floor Plan



Area Map



Accommodation

A three bedroom end of terrace property presented in an excellent condition and situated in a very quiet position within the popular area of Fieldway. Accommodation comprises sitting/dining room with open fire. Modern fitted kitchen with a range of cream units and comprising oven and hob, washing machine, tumble dryer, dishwasher and fridge/freezer. To the rear of the property is a spacious conservatory.

To the first floor is two double bedrooms and a single bedroom with a smart bathroom suite with power shower over the bath. The property further benefits from being on a corner plot with garage and parking to the rear. Gas central heating and double glazing throughout.

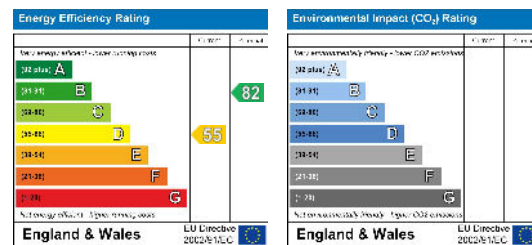
Regret No Smokers. The Landlord may consider one small pet.

EPC 'D'
Council Tax Band 'D' (£2027.01 - 2022-2023)

Viewing

Please contact us on 01444 455221 if you wish to arrange a viewing appointment for this property or require further information.

Energy Efficiency Graph



These particulars, whilst believed to be accurate are set out as a general outline only for guidance and do not constitute any part of an offer or contract. Intending purchasers should not rely on them as statements of representation of fact, but must satisfy themselves by inspection or otherwise as to their accuracy. No person in this firm's employment has the authority to make or give any representation or warranty in respect of the property.