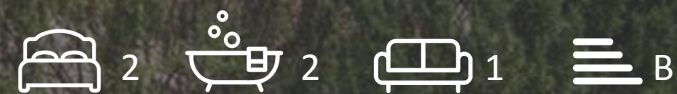


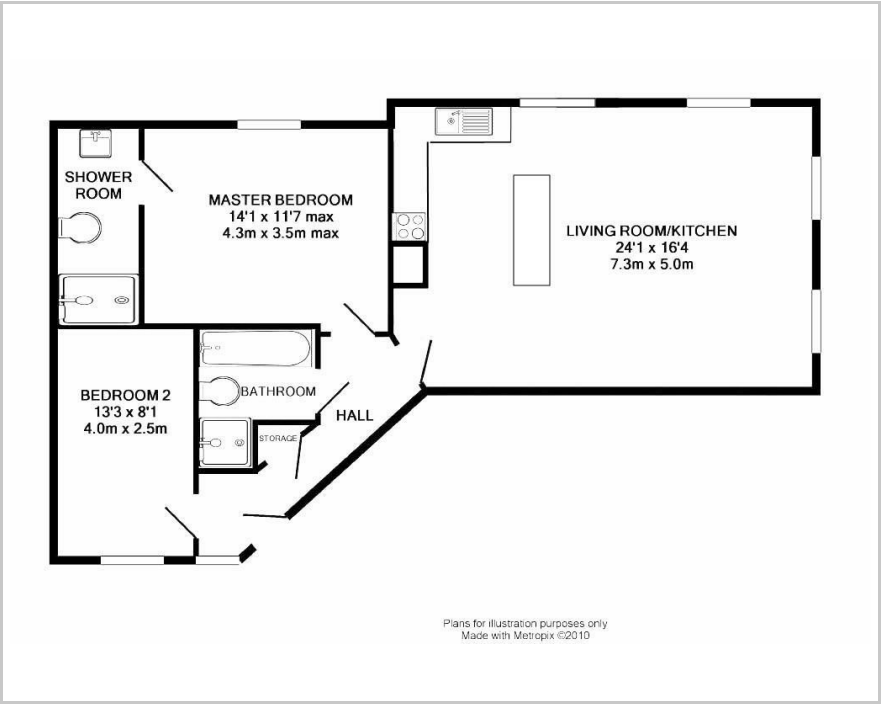


3 Butchers Court, Haywards Heath, RH16 4NH

£1,350 PCM



Floor Plan



Area Map



These particulars, whilst believed to be accurate are set out as a general outline only for guidance and do not constitute any part of an offer or contract. Intending purchasers should not rely on them as statements of representation of fact, but must satisfy themselves by inspection or otherwise as to their accuracy. No person in this firm's employment has the authority to make or give any representation or warranty in respect of the property.

Accommodation

Duffy & Company are pleased to be offering a luxury first floor apartment situated in the sought after Southdowns Park development.



Viewing

Please contact us on 01444 455221 if you wish to arrange a viewing appointment for this property or require further information.

Energy Efficiency Graph

