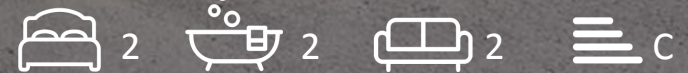




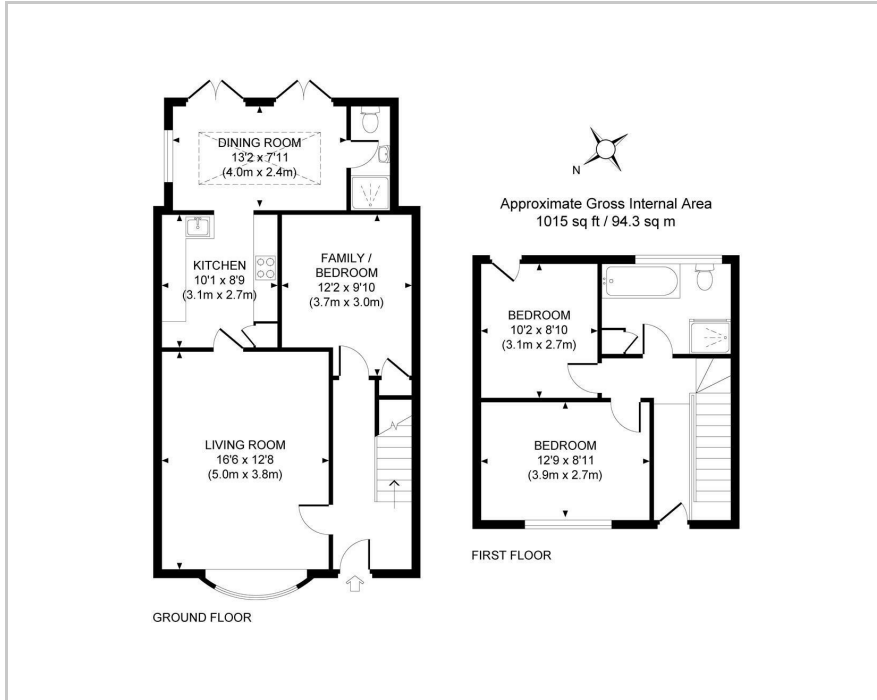
**38 The Nursery, Burgess Hill, RH15 0LE**

**£1,550 Per Month**





## Floor Plan



A well presented modern 2 bedroom mid-terrace 2 bedroom chalet bungalow located in a quite residential cul de sac .

This surprisingly spacious property enjoys a bright and airy living room with bay window, refitted kitchen with dining area adjacent with feature lantern lighted ceiling and 2 double patio doors leading to the low maintenance garden and patio. There is also a ground floor wet room with WC and very useful home office/study or possibly bedroom 3 on the ground floor.

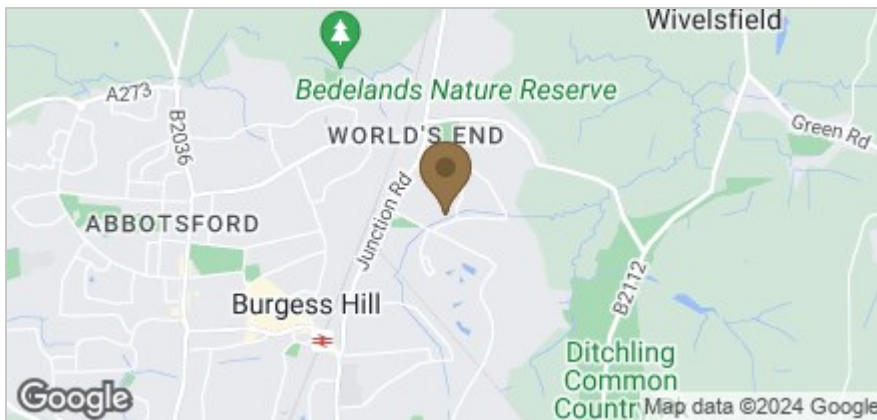
Located on the first floor are 2 double bedrooms and modern family bathroom with bath and standalone walk in shower enclose, WC and hand basin.

The whole property is neutrally decorated though out with fitted carpets on the first floor and stairs with Karndean flooring fitted throughout on the ground floor.

12 months tenancy  
 Council Tax: Band 'C' Mid Sussex District Council.  
 Rent: £1550 pcm  
 Deposit: £1780.00 (approx. 5 weeks rent)



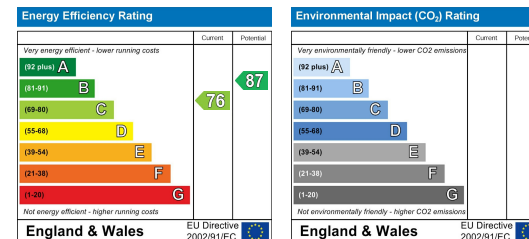
## Area Map



## Viewing

Please contact us on 01444 455221 if you wish to arrange a viewing appointment for this property or require further information.

## Energy Efficiency Graph



These particulars, whilst believed to be accurate are set out as a general outline only for guidance and do not constitute any part of an offer or contract. Intending purchasers should not rely on them as statements of representation of fact, but must satisfy themselves by inspection or otherwise as to their accuracy. No person in this firm's employment has the authority to make or give any representation or warranty in respect of the property.