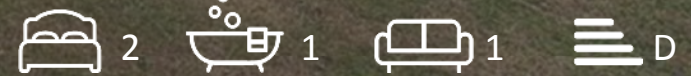
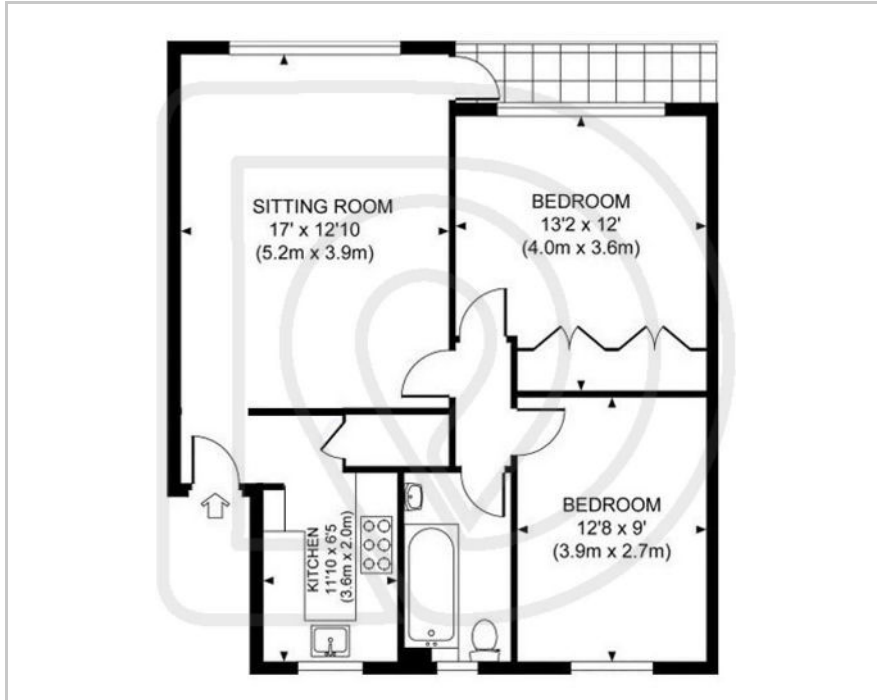




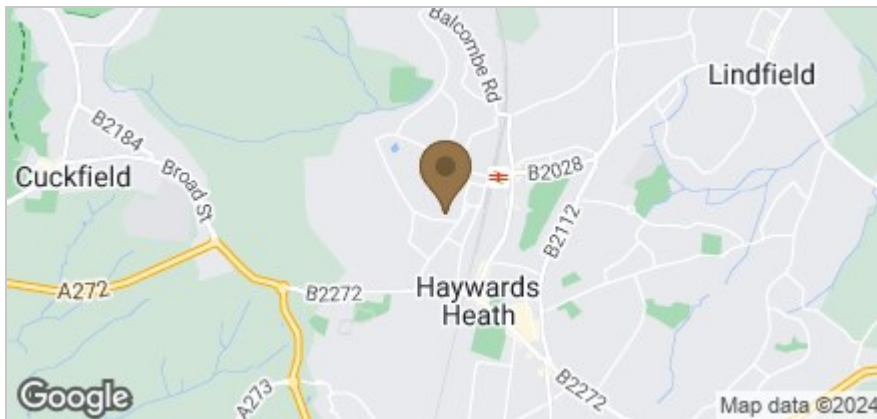
**8 Tennyson Court Paddockhall Road, Haywards Heath, RH16 1EZ**  
**£1,250 Per Calendar Month**



## Floor Plan



## Area Map



## Accommodation

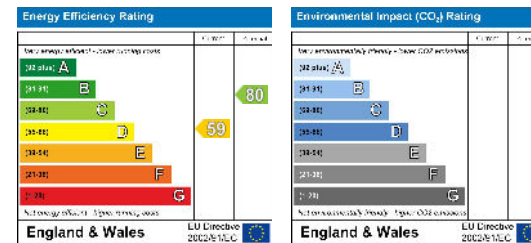
A spacious ground floor 2 double bedroom apartment located in a very prominent and convenient development that is a short walk to the main line station, Waitrose supermarket and the Dolphin leisure centre.

WHAT3WORDS:  
///channel.riper clotting

## Viewing

Please contact us on 01444 455221 if you wish to arrange a viewing appointment for this property or require further information.

## Energy Efficiency Graph



These particulars, whilst believed to be accurate are set out as a general outline only for guidance and do not constitute any part of an offer or contract. Intending purchasers should not rely on them as statements of representation of fact, but must satisfy themselves by inspection or otherwise as to their accuracy. No person in this firm's employment has the authority to make or give any representation or warranty in respect of the property.