



Duffy & Co  
The sales & letting company

[www.duffyco.com](http://www.duffyco.com)



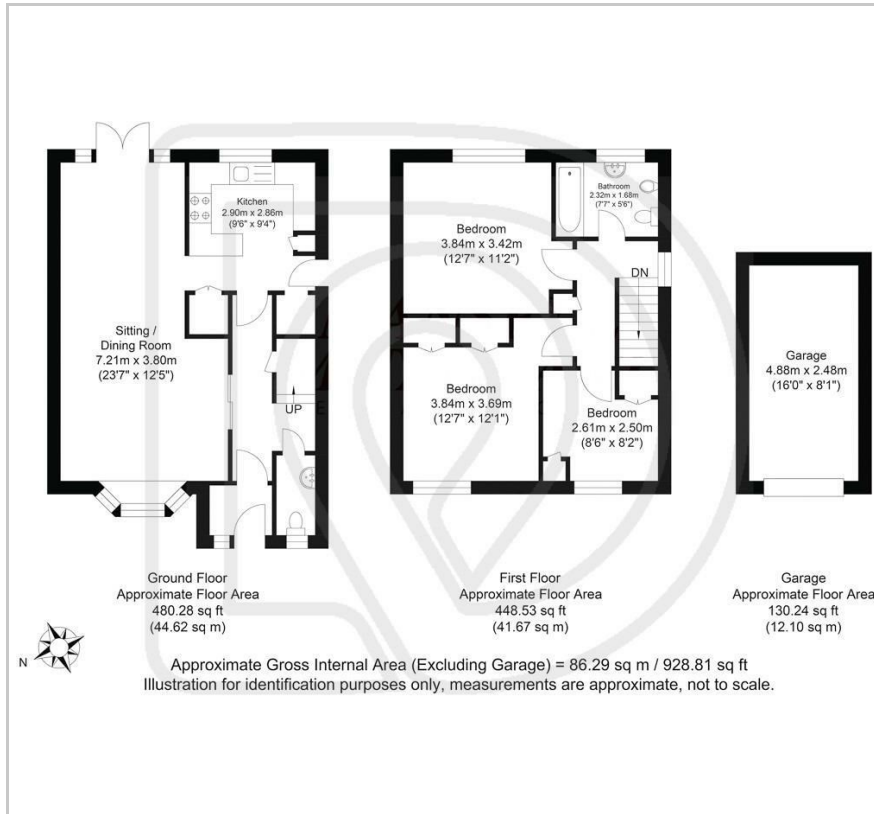
## 15 Leveller Road

Newick, Lewes, BN8 4PL

**£1,650 Per Month**



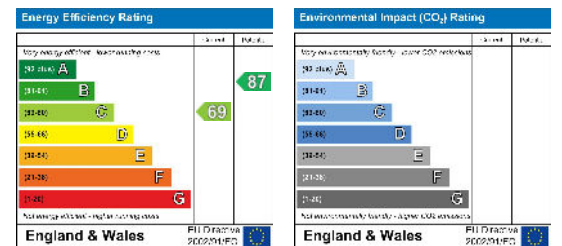
## Floor Plan



## Area Map



## Energy Efficiency Graph



A rarely available 3 bedroom semi detached house located in the desirable village of Newick.

This spacious property has just been fully redecorated throughout and comprises: Entrance porch leading to the ground floor hall with separate WC, A large through lounge diner with access to the fitted kitchen with new eclectic oven, washing machine and a breakfast bar with space for fridge freezer (not supplied).

On the first floor there are 2 large double bedrooms and good sized third single. The front double bedroom also enjoys a good range of built in wardrobes. A new family bathroom has been fitted with shower above the bath with glass shower screen.

Outside there are low maintenance gardens front and rear, with a single garage located to the rear that is also located securely behind gates, allowing secure access from the rear garden into the property whilst the gates are shut.

Additional benefits include plantation blinds that have been fitted to most windows throughout, newly fitted carpets and recently decorated throughout.

Regrets No smokers

Minimum term: 12 month lets  
 Deposit £1903.00  
 Council tax Band 'D'  
 EPC Rating 'C'  
 Available: Now (subject to references)



These particulars, whilst believed to be accurate are set out as a general outline only for guidance and do not constitute any part of an offer or contract. Intending purchasers should not rely on them as statements of representation of fact, but must satisfy themselves by inspection or otherwise as to their accuracy. No person in this firm's employment has the authority to make or give any representation or warranty in respect of the property.