



Duffy & Co
The sales & letting company

www.duffyco.com



© Duffy & Co



7a St. Edmunds Road

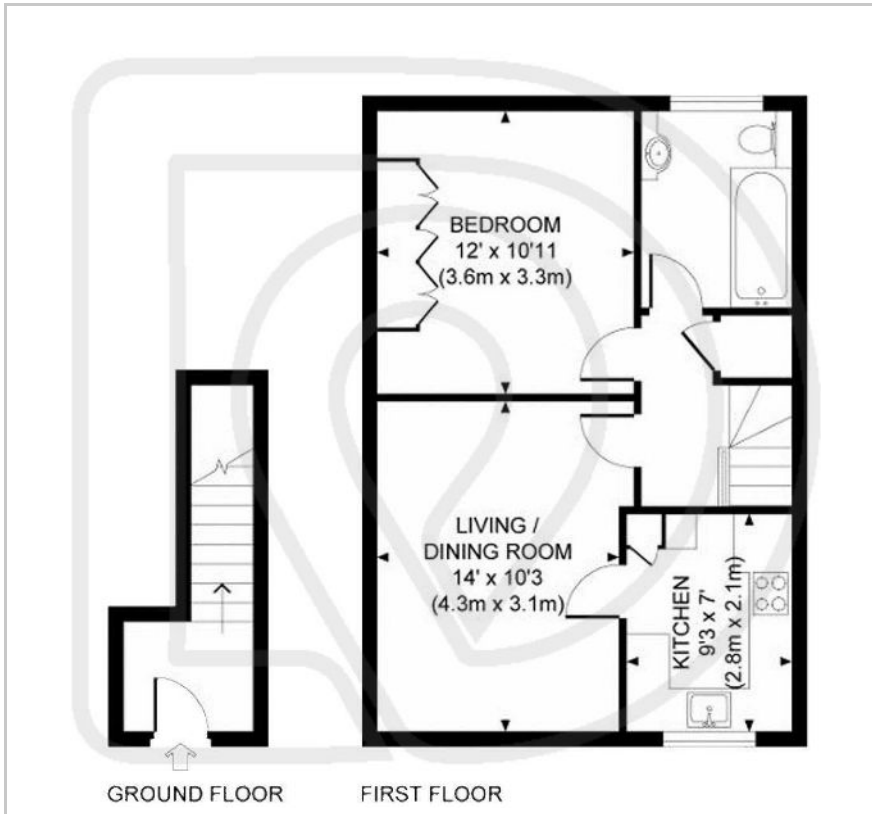
, Haywards Heath, RH16 4HJ

£975 Per Month



 1  1  1  C

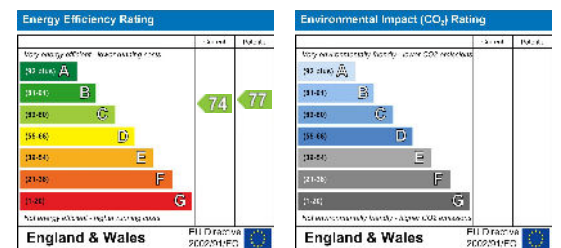
Floor Plan



Area Map



Energy Efficiency Graph



The property has recently been renovated with fresh paint and new carpets throughout, giving it an inviting and modern feel. The apartment offers a private entrance on the ground floor into the entrance hall with stairs leading to the first floor. The living area is spacious and bright, with large windows that let in plenty of natural light with a modern fitted kitchen adjacent with white goods included.

The bedroom is a good size double room with fitted wardrobes, providing plenty of storage space. The modern bathroom has a shower above the bath. The property also benefits from gas central heating and double glazed windows throughout.

The area of Haywards Heath is a desirable location for a variety of reasons. It is close to Princess Royal Hospital, convenient for the Broadway and High Street, and is within easy reach of the main line station. There are plenty of shops, restaurants and pubs close by, as well as parks to explore and leisure activities to enjoy. It is also ideally located for commuters, with easy access to London via train or bus routes.

This property is ideally suited for mature professionals and is not suitable for children or pets.

Deposit: £1125.00 (equivalent of 5 weeks rent)

Rent: £975 PCM

EPC Rating: 'C'

Council Tax Band: 'C' (waiting on confirmation as maybe 'B').

Term : 12 Month lets

Available early June 2023.



These particulars, whilst believed to be accurate are set out as a general outline only for guidance and do not constitute any part of an offer or contract. Intending purchasers should not rely on them as statements of representation of fact, but must satisfy themselves by inspection or otherwise as to their accuracy. No person in this firm's employment has the authority to make or give any representation or warranty in respect of the property.