



1 Beech Cottages St. Johns Road, Haywards Heath – RH16 4EH

Guide Price **£355,000**





1 Beech Cottages St. Johns Road

Haywards Heath, Haywards Heath

Guide Price £355,000

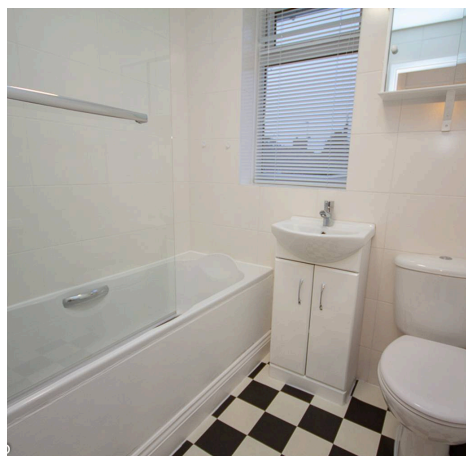
Council Tax band: D

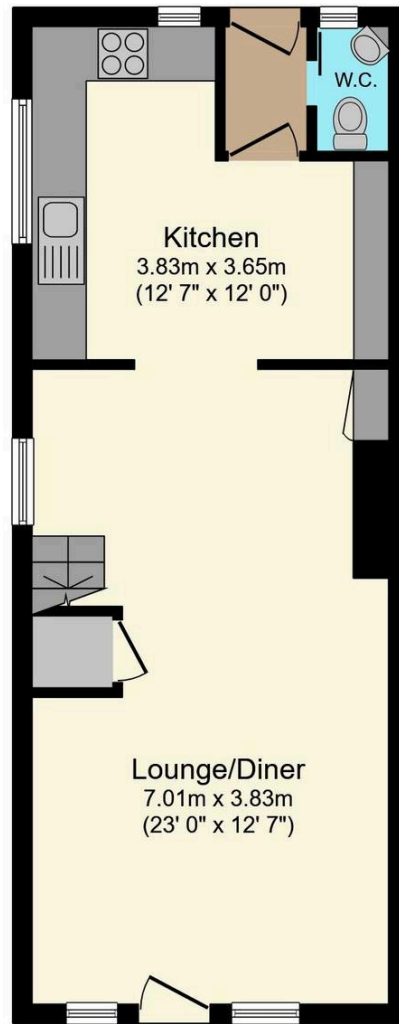
Tenure: Freehold

EPC Energy Efficiency Rating: D

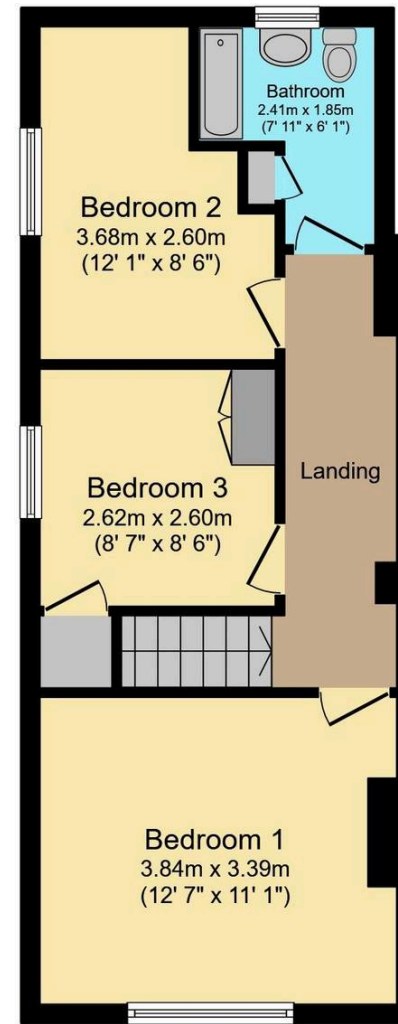
EPC Environmental Impact Rating: D

- Prime southern Haywards Heath location close to Princess Royal Hospital and amenities
- Elevated position with charming roof and treetop views from the first floor
- Spacious open-plan living and dining room with laminate flooring
- Modern kitchen with white gloss units and integrated appliances
- Separate ground floor WC
- Three bedrooms.
- Family bathroom with white suite and shower over bath
- Gas central heating and double glazing throughout
- Low maintenance walled courtyard garden
- No onward chain





Ground Floor



First Floor

Total floor area 84.4 sq.m. (909 sq.ft.) approx

This floor plan is for illustrative purposes only. It is not drawn to scale. Any measurements, floor areas (including any total floor area), openings and orientation are approximate. No details are guaranteed, they cannot be relied upon for any purpose and they do not form part of any agreement. No liability is taken for any error, omission or misstatement. A party must rely upon its own inspection(s). Plan produced for Purple Bricks. Powered by www.focalagent.com

Duffy & Co

Duffy & Co, 49 The Broadway – RH16 3AS

01444 455221 • info@duffyco.com • <http://www.duffyco.com>

Details are provided as a general guide only and do not form part of any offer or contract. Interested parties should verify accuracy by inspection, survey and their own enquiries. Services and appliances have not been tested and no warranty is given as to their condition.